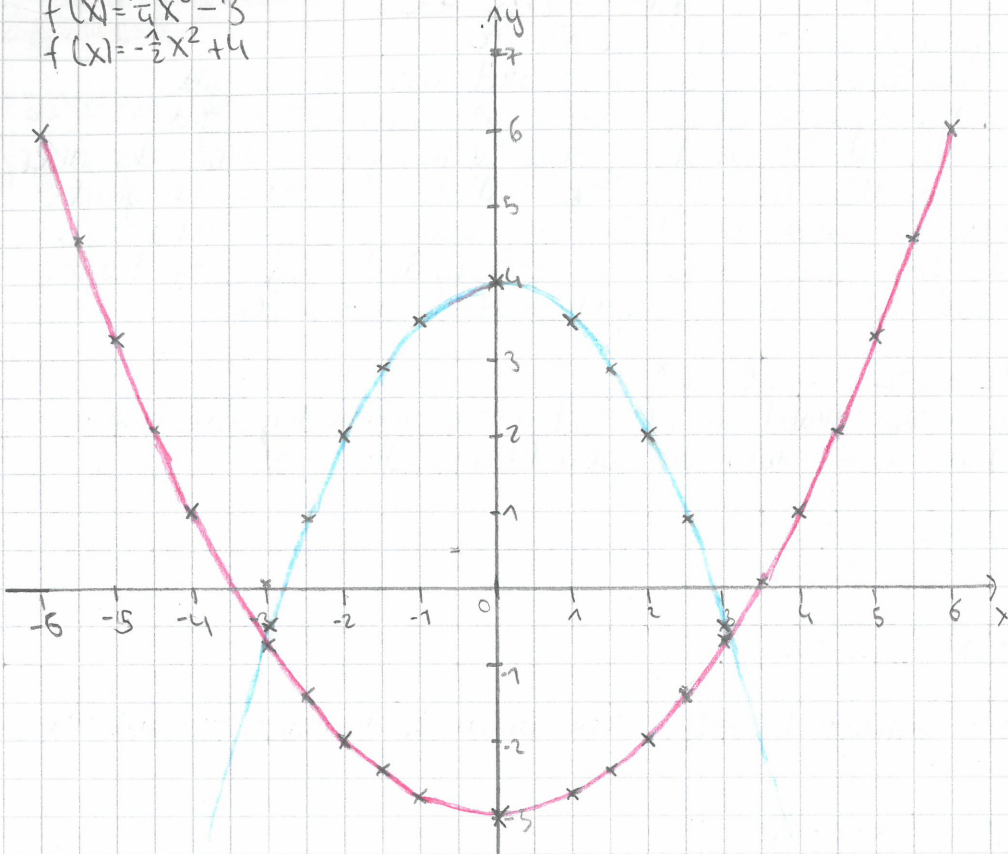


08.09.20

Schnelles Zeichnen von speziellen Parabeln

$$f(x) = \frac{1}{4}x^2 - 3$$

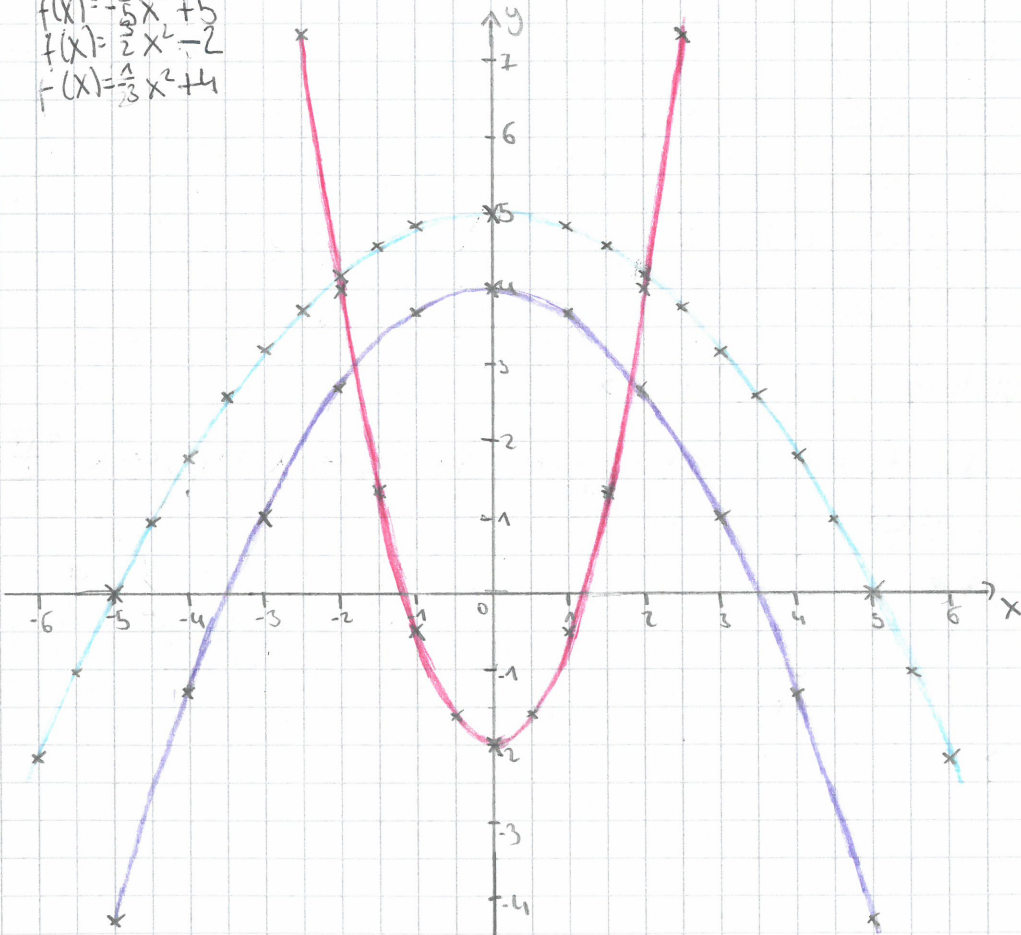
$$f(x) = -\frac{1}{2}x^2 + 4$$

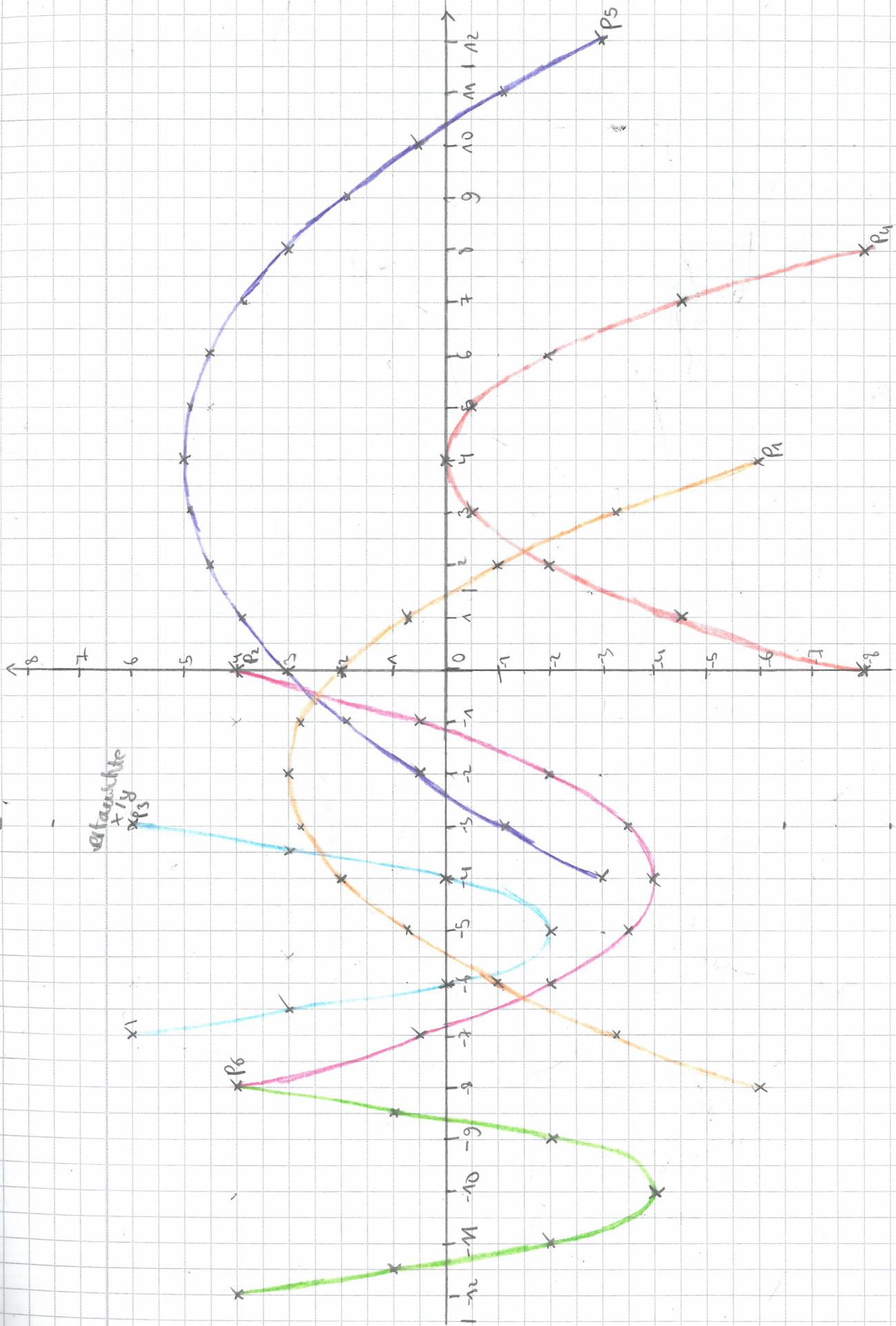


$$f(x) = -\frac{1}{5}x^2 + 5$$

$$f(x) = \frac{1}{2}x^2 - 2$$

$$f(x) = \frac{1}{3}x^2 + 4$$





Abstandskurve
 x_1
 x_2
 x_3